

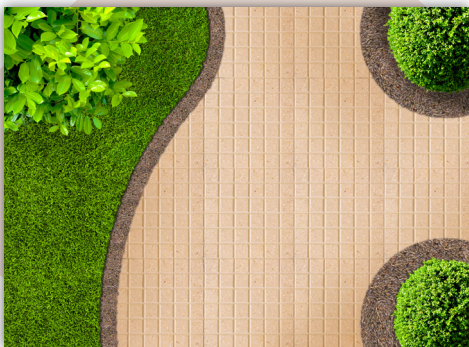
DESIGN TILES

Design tiles are exceptionally durable and a perfect alternative to standard interlock tiles. Our design tiles come in wide range of colours, textures and patterns providing countless design options. We utilize high quality materials including terrazzo chips to ensure the longevity of the colour and gloss surpasses that of interlock tile. Design tiles are recommended for walkways, courtyards, pool areas and private driveways.



Benefits of Design Tile

- High level of customization
- Long lasting colour and shine
- Provides a polished appearance
- Non-slip surface
- Low maintenance



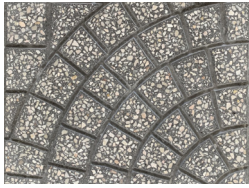
Muttrah Corniche, Muscat

DESIGN TILES

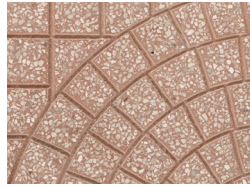
Design Tiles are available in two variants:

- Concrete/Cement Type–These are unpolished & without a Terrazzo surface
- Terrazzo Type–These have a polished surface

A surface sealer is available for Design Tiles, this would be applied after installation. Additional colours are also available. Please speak with your sales representative for more information on both of these options.



Grey Arch



Red Arch



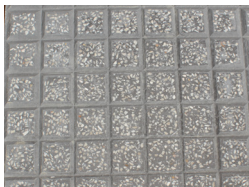
White Arch



Yellow Arch



Brown Arch



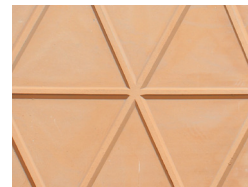
Grey Chequered



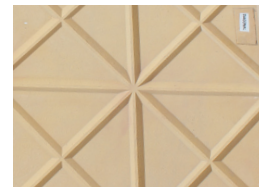
Red Chequered



White Chequered



Yellow Diamond



Yellow Diagonal



Grey Star



Red Stud



White Star



Yellow Star



Yellow Flower



Grey Stud



Grey Diamond

Technical Specifications

	Size (cm)	Thickness (mm) as BS	Weight of Each Tile (kg)	No of Tiles Per m ²	Weight kg/m ²	No of Tiles Per Pallet	SQM of Tile Per Pallet
Terrazzo Design Tile	30 x 30	25±3	5.8-6.5	11.11	65-72	336	30.24
Terrazzo Design Tile	40 x 40	35±3	12~13	6.25	75-78	150	24

Dimension, weight and specifications indicated above are average value. Special dimensions can be offered upon request.